

## V-SFT Ver. 6.2.11.0 Update Information



	V10	V9	TSi/TS	V8i(N)/V8(N)	X1
System program	Ver. 1.700	Ver. 3.600	Ver. 2.470	Ver. 2.390	Ver. 2.300 *2
OS	Ver. 1.80 *1	Ver. 5.00 *1			

\*1 Storage is necessary for updating.

\*2 Please download the X1 update program from our website. For the update procedure, refer to the "Update procedure" provided with the update program.

### Connection

- Additional connectable device: KEYENCE KV-X500/X300 (Ethernet TCP/IP)**  
 Applicable model: V10, V9, TSi, X1  
 Device: KEYENCE KV-X500/X300 (Ethernet TCP/IP)
- Additional connectable device: KEYENCE KV-X500/X300 Tag (Ethernet UDP/IP)**  
 Applicable model: V10, V9, TSi, X1  
 Device: KEYENCE KV-X500/X300 Tag (Ethernet UDP/IP)
- Additional connectable device: Fuji Electric FSZ (MODBUS RTU)**  
 Applicable model: V10, V9, TSi/TS, X1  
 Device: Fuji Electric FSZ (MODBUS RTU)
- Additional connectable device: OMRON E5xC-T**  
 Applicable model: V10, V9, TSi/TS, X1  
 Device: OMRON E5xC-T

### Function

- OPC UA server function supported**

Applicable model: V10 (V10xxiSLPD only)

\* X1 is only supported for (1).

<Overview>

OPC UA server is now supported on V10 select models.

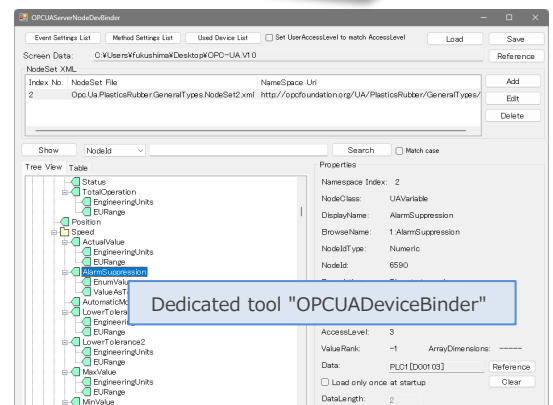
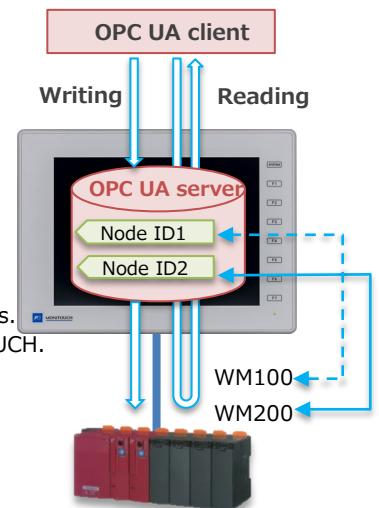
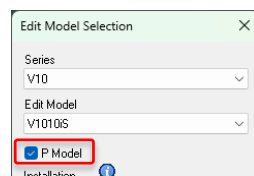
The following functions are available:

- Data access function**  
 Responds to client access requests by returning data from PLC devices/internal devices. Even if the PLC itself does not support OPC UA, data can be read/written via MONITOUCH.
- Event function**  
 Notifies clients of events occurring on the MONITOUCH.
- Method function**  
 Executes macros on the MONITOUCH in response to client calls.
- Support for simultaneous use as OPC UA server and client**  
 MONITOUCH not only provides data as an OPC UA server, but also acquires data from external OPC UA server as a client.
- Support for linking OPC UA server nodes and PLC/internal devices**  
 using the dedicated tool "OPCUADeviceBinder".  
 It reads Nodeset XML files and screen data to link devices.

<Setting location>

[System Setting] -> [Other] -> [IIoT Setting] -> [OPC UA(server)]

\* For details, refer to "OPC UA manual".



Dedicated tool "OPCUADeviceBinder"

## 2 OPC UA client function supported \* X1 is already supported.

Applicable model: V10 \* OS updating is necessary

### <Overview>

OPC UA client is now supported on V10.

Data access function is available.

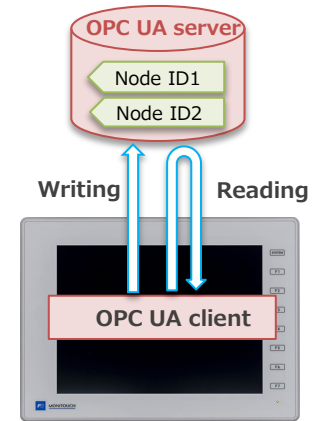
Node information from NodeSet XML files can be imported into screen data, allowing nodes to be specified as tags for parts and setting devices.

### <Setting location>

[System Setting] -> [Hardware Setting] -> [Connected Device]  
-> [PLC: OPC UA server TCP/IP (Ethernet)]

[System Setting] -> [Other] -> [IIoT Setting] -> [OPC UA(client)]

\* For details, refer to "OPC UA manual".



## 3 USB camera MotionJPEG supported

Applicable model: V10

### <Overview>

Video display for "MotionJPEG" is now supported.

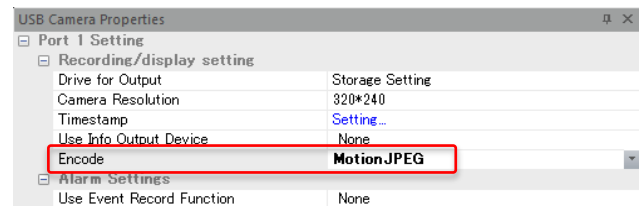
If the settings and camera specifications do not match, it will be output to the information output device.

### <Setting location>

[System Setting] -> [Hardware Setting] -> [USB Camera] -> [Encode]

### <Information output device>

Bit	Setting value	Action
06 bit	0: Match 1: Mismatch	After checking the USB camera specifications, change the encode in the properties.



## 4 Extended data sheet Applicable item added

Applicable model: V10, V9, X1

### <Overview>

Trend sampling can now be placed on the extended data sheet screen.

### <Note>

Trend sampling switches cannot be placed.  
Data sampling is not available.

## 5 Local mode: Date/Time setting

Applicable model: V10, V9, X1

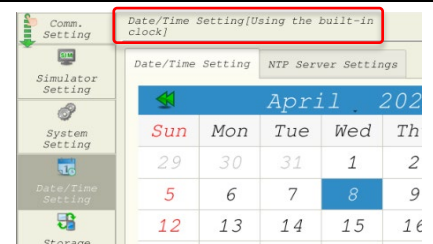
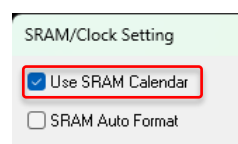
### <Overview>

The [Date/Time Setting] screen on the Local mode displays the [used/unused] status of the built-in clock.

\* Changes to the built-in clock [used/unused] are made in the screen data.

Unused: Synchronize with the PLC calendar (Date and time cannot be changed on this screen)

Used: Use SRAM Calendar (Date and time can be changed on this screen)



## 6 System device for the USB printer status (\$s1069) added

Applicable model: V10, V9

### <Overview>

USB printer status is stored in system device \$s1069.

\$s1069

0: Ready to print

1: Printing or paused due to out of paper, etc.

2: Unable to transfer print data

MONITOUCH ->

## 7 Operation log viewer operability improved

Applicable model: V10, V9, X1

### <Overview>

(1) The design of the Filter/Sort icons has been updated.

(2) Filter and sort settings are now retained even when the power is turned off.

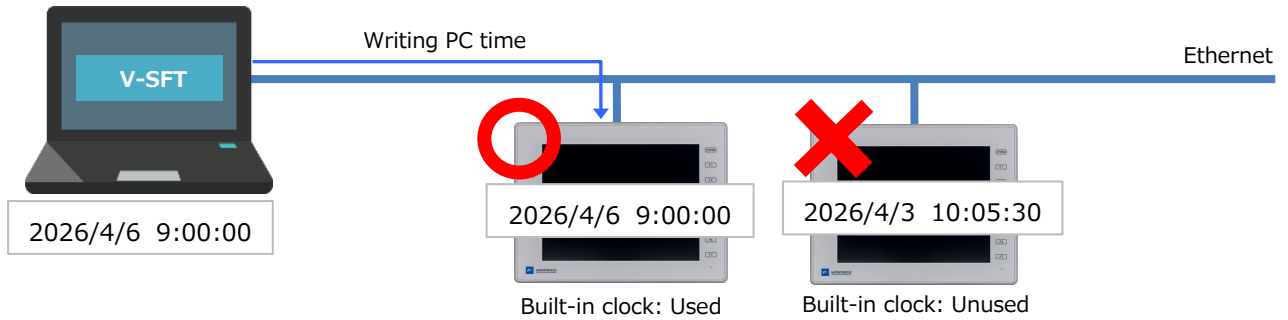
# Configuration Software

## 1 Built-in clock correction

Applicable model: V10, V9, TSi/TS, X1

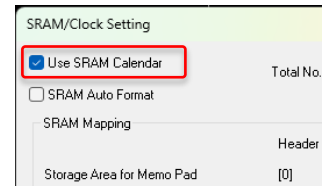
<Overview>

When transferring the screen data from V-SFT to the unit, PC time can be written to the built-in clock of the unit. This makes it easy to perform the time adjustment during equipment startup or maintenance.



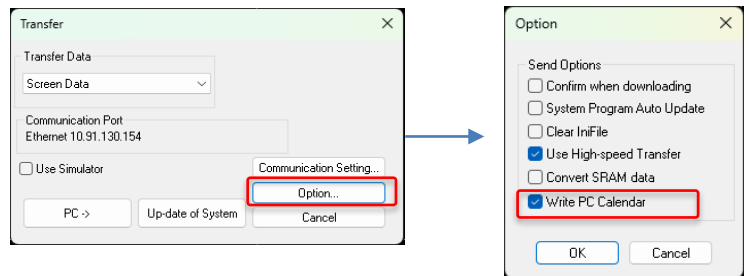
<Setting location>

1. [System Setting] in the screen data -> [Unit Setting] -> [SRAM/Clock Setting] -> select [Use SRAM Calendar].



\* When [Use SRAM Calendar] is not selected, this option is disabled to synchronize with the PLC calendar when switching to the RUN screen.

2. [Transfer] -> [Download] -> [Option], and select [Write PC calendar] checkbox.



3. Click [PC->] to execute the transfer.

## 2 Tag import from Siemens TIA Portal extended

<Overview>

TIA project files (\*.ap20) created with TIA Portal Ver. 20 can be imported.

**\* OS updating is necessary (V10 only)**