



## Smart Editor Ver. 1.1.4.0 Update Information

	V10	V9	TS4000	TSi/TS	V8i(N)/V8(N)	X1
System program	Ver. 1.700	Ver. 3.600	Ver. 1.400	Ver. 2.470	Ver. 2.390	Ver. 2.300 *2
OS	Ver. 1.80 *1	Ver. 5.00 *1	Ver. 1.20			

\*1 Storage is necessary for updating.

\*2 Please download the X1 update program from our website. For the update procedure, refer to the "Update procedure" provided with the update program.

### Connection

- Additional connectable device: KEYENCE KV-X500/X300 (Ethernet TCP/IP)**  
 Applicable model: V10, V9, TS4000, TSi, X1  
 Device: KEYENCE KV-X500/X300 (Ethernet TCP/IP)
- Additional connectable device: KEYENCE KV-X500/X300 Tag (Ethernet UDP/IP)**  
 Applicable model: V10, V9, TS4000, TSi, X1  
 Device: KEYENCE KV-X500/X300 Tag (Ethernet UDP/IP)
- Additional connectable device: Fuji Electric FSZ (MODBUS RTU)**  
 Applicable model: V10, V9, TS4000, TSi/TS, X1  
 Device: Fuji Electric FSZ (MODBUS RTU)
- Additional connectable device: OMRON E5xC-T**  
 Applicable model: V10, V9, TS4000, TSi/TS, X1  
 Device: OMRON E5xC-T

### Function

#### 1 OPC UA server function supported

Applicable model: V10 (V10xxiSLPD only)  
 TS4000 (TS4xx1Pi only)

\* X1 is only supported for (1).

##### <Overview>

OPC UA server is now supported on select models of the V10/TS4000.

The following functions are available:

##### (1) Data access function

Responds to client access requests by returning data from PLC devices/internal devices. Even if the PLC itself does not support OPC UA, data can be read/written via MONITOUCH.

##### (2) Event function

Notifies clients of events occurring on the MONITOUCH.

##### (3) Method function

Executes macros on the MONITOUCH in response to client calls.

##### (4) Support for simultaneous use as OPC UA server and client

MONITOUCH not only provides data as an OPC UA server, but also acquires data from external OPC UA server as a client.

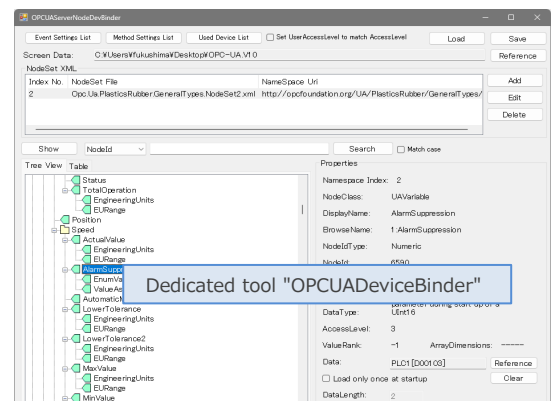
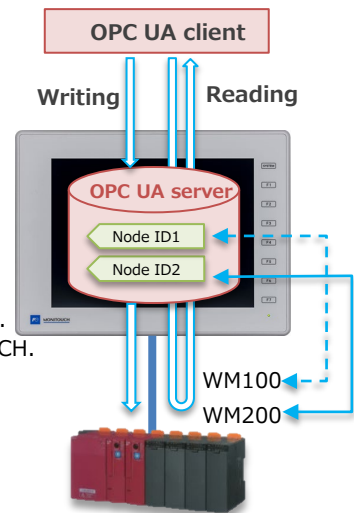
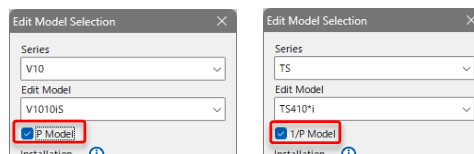
##### (5) Support for linking OPC UA server nodes and PLC/internal devices using the dedicated tool "OPCUADeviceBinder".

It reads Nodeset XML files and screen data to link devices.

##### <Setting location>

Project View -> [System Settings] tab -> [IIoT Setting] -> [OPC UA(server)]

\* For details, refer to "OPC UA manual".



## 2 OPC UA client function supported

\* X1 is already supported.

Applicable model: V10, TS4000

**\* OS updating is necessary**

### <Overview>

OPC UA client is now supported on V10/TS4000.

Data access function is available.

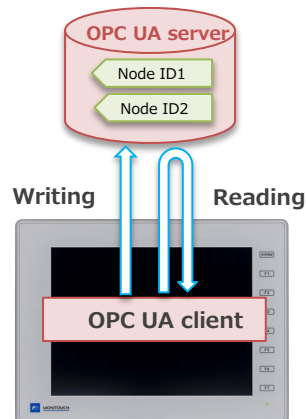
Node information from NodeSet XML files can be imported into screen data, allowing nodes to be specified as tags for parts and setting devices.

### <Setting location>

Project View -> [Hardware Settings] tab -> [Connection Device]  
-> [PLC: OPC UA server TCP/IP (Ethernet)]

Project View -> [System Settings] tab -> [IIoT Setting] -> [OPC UA (client)]

\* For details, refer to "OPC UA manual".



## 3 Web server function extended

Applicable model: V10, TS4000

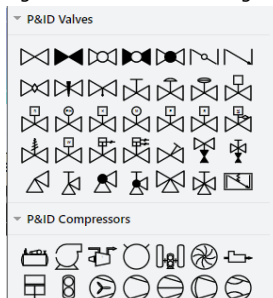
**\* OS updating is necessary**

### <Overview>

The following functions have been added.

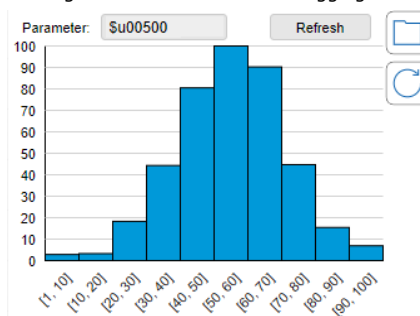
- (1) Additional supported browsers  
Microsoft Edge, iOS Safari
- (2) TELLUS5-HMI supports Web server
- (3) Smart Editor: Number of tag registrations expanded  
V10, TELLUS5 : 32,767  
TS4000 : 16,383
- (4) Web Editor: Additional parts  
Added designs for char. display (display only)/text display (editable)/pie graph/statistic bar graph/histogram/P&ID (Piping & Instrumentation Diagram)
- (5) Web Editor: Additional functions
  - a. Switch
    - Output Action: Momentary
    - Interlock Condition: Tag
  - b. Switch/Lamp: Font color changeable after ON pattern
  - c. Show/Hide Condition: Tag
  - d. Num. Display: Zero suppress display selectable
  - e. Graphs (trend/bar/meter)
    - Scale: Tag designation
  - f. Bar graph direction: Left/right
  - g. Alarm: Column order for item to display changeable
  - h. Communication setting: Data read cycle: Custom
  - i. Tag usage list

[P&ID  
(Piping & Instrumentation Diagram)]



[Histogram Display]

Using historical data from the logging server



[Tag Usage List]

Easily check where tags are used.

Tag Name	Used Point	Function
Alarm	Screen(3)	Switch
Alarm	Screen(3)	Switch
Alarm	Screen(3)	Switch
Alarm	Screen(3)	Switch
Alarm	Screen(3)	Switch
Alarm	Screen(4)	Switch
Alarm	Screen(4)	Switch
Alarm	Screen(4)	Switch
Alarm	Screen(4)	Switch
Alarm	Screen(4)	Meter graph Trigger
Alarm	Screen(4)	Bar graph Trigger
Alarm	Screen(5)	Utilization graph Trigger
Alarm	Screen(7)	Stat. pie graph Trigger
Alarm	Screen(7)	Histogram Trigger
Good	Screen(2)	Bar graph
Good	Screen(2)	Num. Display
Good	Screen(3)	Num. Display
Good	Screen(3)	Num. Display
Good	Screen(4)	Meter graph

\* For details, refer to "Web Server manual".

## 4 USB camera MotionJPEG supported

Applicable model: V10

### <Overview>

Video display for "MotionJPEG" is now supported.

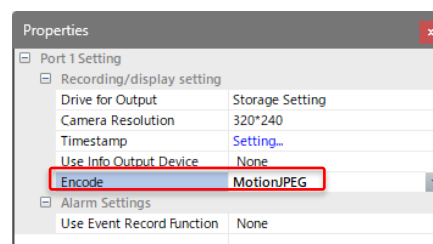
If the settings and camera specifications do not match, it will be output to the information output device.

### <Setting location>

Project View -> [Hardware Settings] tab -> [USB camera] -> [Encode]

### <Information output device>

Bit	Setting value	Action
06 bit	0: Match 1: Mismatch	After checking the USB camera specifications, change the encode in the properties.



## 5 TS4000 series PDF viewer supported

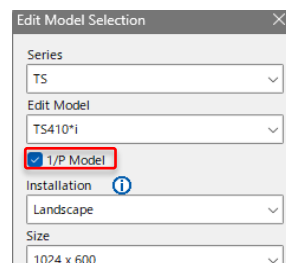
Applicable model: TS4xx1i, TS4xx1Pi only

<Overview>

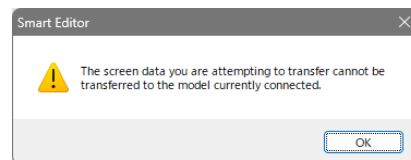
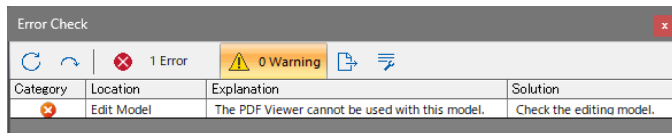
PDF viewer display is now supported on select models of the TS4000 series.

<Setting location>

Project View -> [Hardware settings] tab -> select [1/P Model] checkbox in [Edit Model]



\* If PDF viewer settings are configured without selecting the [1/P Model], an error will be displayed in the [Error Check] window.



\* Screen data that the PDF viewer are being used cannot be transferred to the units (TS4xx0i) that do not support the PDF viewer.

## 6 Switch/Lamp Offset supported

Applicable model: V10, V9, TS4000, X1

<Overview>

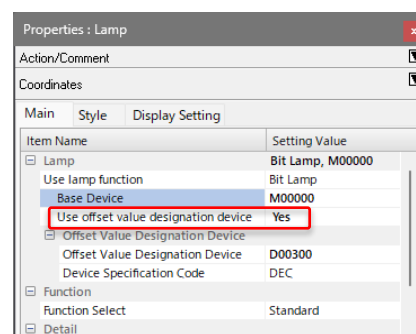
An offset value can now be specified in the output device settings for the switch and the device settings for the lamp.

<Setting location>

Switch [Main] -> [Output Device] -> [Use offset value designation device: Yes]

Lamp [Main] -> select [Use lamp function: Bit Lamp/Word Lamp] and [Use offset value designation device: Yes]

\* Offset is not available when [N-state lamp] is selected.□



<Example 1>

Base Device: M0  
Offset 0 -> M0  
Offset 1 -> M1  
Offset 5 -> M5

<Example 2>

Base Device: D100-00  
Offset 0 -> D100-00  
Offset 1 -> D101-00  
Offset 5 -> D105-00

When specifying a bit in a word device, the address part is offset.

## 7 Extended data sheet Applicable item added

Applicable model: V10, V9, TS4000, X1

<Overview>

Trend sampling can now be placed on the extended data sheet screen.

<Note>

Trend sampling switches cannot be placed.  
Data sampling is not available.

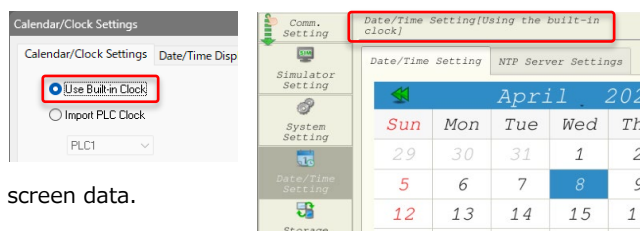
## 8 Local mode: Date/Time setting

Applicable model: V10, V9, X1

<Overview>

The [Date/Time Setting] screen on the Local mode displays the [used/unused] status of the built-in clock.

\* Changes to the built-in clock [used/unused] are made in the screen data.



Unused: Synchronize with the PLC calendar (Date and time cannot be changed on this screen)

Used: Use built-in clock (Date and time can be changed on this screen)

## 9 System device for the USB printer status (\$s1069) added

Applicable model: V10, V9, TS4000

<Overview>

USB printer status is stored in system device \$s1069.

\$s1069

0: Ready to print

1: Printing or paused due to out of paper, etc.

2: Unable to transfer print data

MONITOUCH ->

## 10 Operation log viewer operability improved

Applicable model: V10, V9, TS4000, X1

<Overview>

(1) The design of the Filter/Sort icons has been updated.

(2) Filter and sort settings are now retained even when the power is turned off.

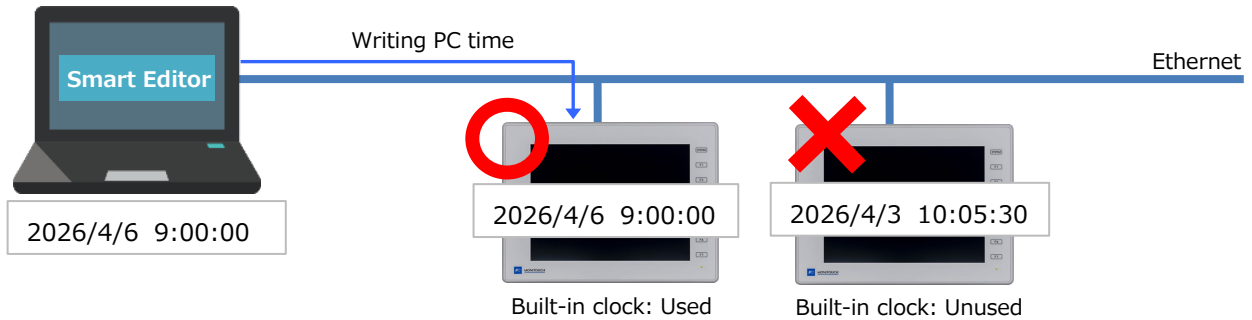
# Configuration Software

## 1 Built-in clock correction

Applicable model: V10, V9, TS4000, TSi/TS, X1

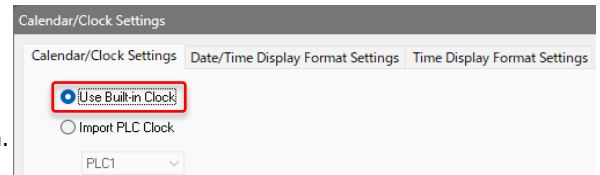
<Overview>

When transferring the screen data from Smart Editor to the unit, PC time can be written to the built-in clock of the unit. This makes it easy to perform the time adjustment during equipment startup or maintenance.



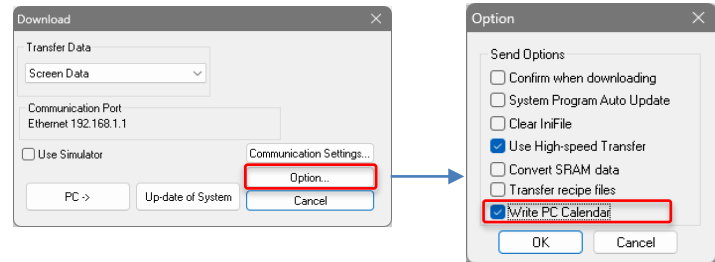
<Setting location>

1. Project View in the screen data -> [Hardware Settings] tab -> [Calendar/Clock Settings] -> select [Use Built-in Clock].



- \* When [Import PLC Clock] is selected, this option is disabled to synchronize with the PLC calendar when switching to the RUN screen.

2. [Transfer] -> [Download] -> [Option], and select [Write PC Calendar] checkbox.



3. Click [PC->] to execute the transfer.

## 2 Tag import from Siemens TIA Portal extended

<Overview>

TIA project files (\*.ap20) created with TIA Portal Ver. 20 can be imported. **\* OS updating is necessary (V10/TS4000 only)**

## 3 General settings

<Overview>

[Reset to Default] button has been added to [General Settings].

If you lose track of the original settings after making changes, this allows you to restore them to the default state.

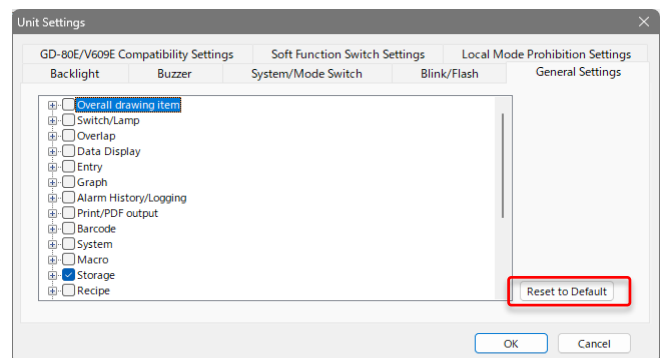
<Supplement>

The default settings vary depending on the settings for the screen data.

Project View -> [Hardware Settings] tab ->

[Control Area]: The state when a new file is created

[Read/Write Area]: The state where screen data from V8 or earlier is converted to V9/V10



<Note>

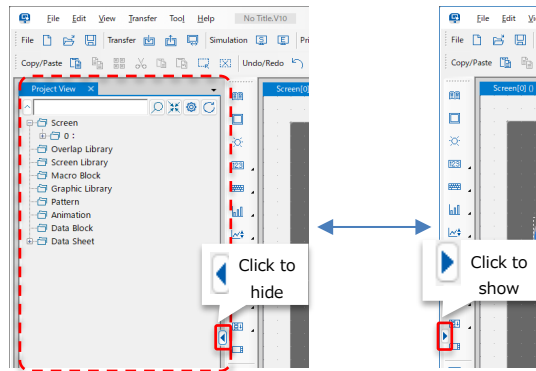
When the PLC model is [Universal Serial] (Read/Write Area), the settings will be restored to the state when a new file is created.

## 4 Operability improved

### ■ Project View

#### (1) Show/Hide button added

The Project View can now be shown or hidden.



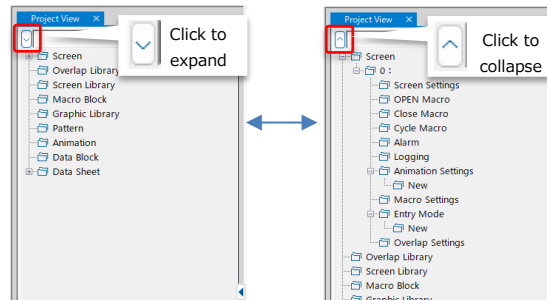
#### (2) Expand All/Collapse All button added to the tree view

#### (3) Setting the tree state at startup

<Setting location>

[File] -> [Properties] -> [General] tab, and select [Collapse the tree on initial display] checkbox to set the tree state when opening screen data.

Unchecked: Startup with all trees expanded  
Checked: Startup with all trees collapsed

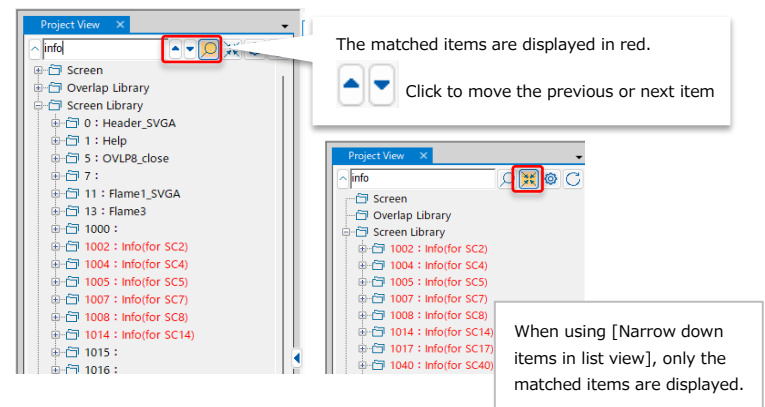


#### (4) Search functions added

Search for text in the Project View

You can search by keyword on each of the [Hardware Settings], [System Settings], and [Screen] tabs.

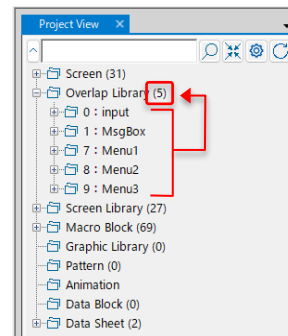
[Search] and [Narrow down items in listview] cannot be used simultaneously.



#### (5) Number of registrations for tree items

<Setting location>

[File] -> [Properties] -> [General] tab, and select [Show number of registrations (xx)] checkbox.



### ■ Window

The window state is now retained when closing the Smart Editor.

<Applicable Window>

Properties / Design / Catalog

Item Information / Error Check

Text Search / Tag Search / Cross Reference / Macro Command

Continued

■ Properties

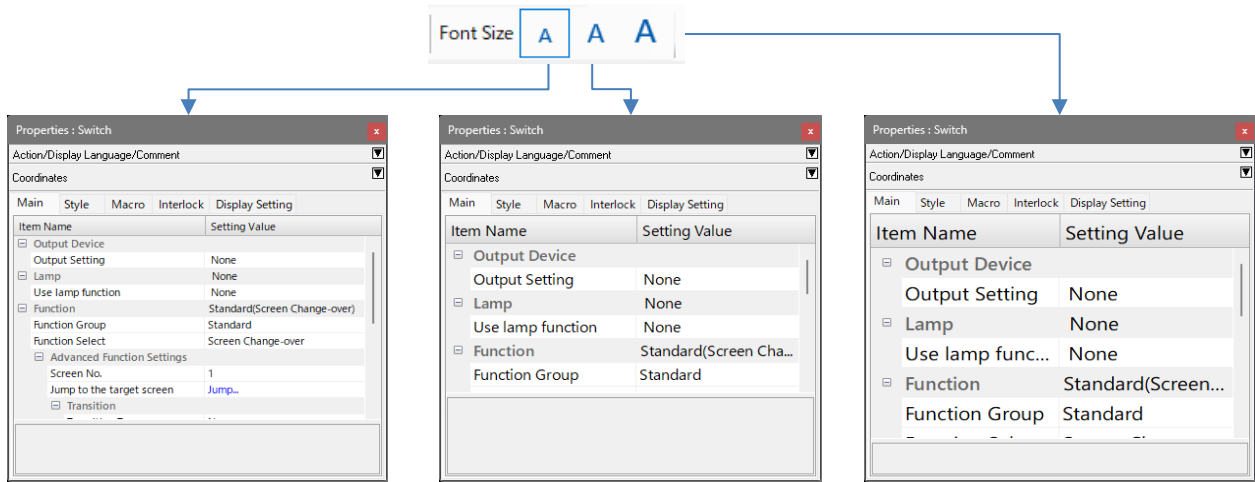
<Overview>

(1) Font size change

You can change the font size in “Properties” and “Design” to Small/Medium/Large.

<Setting location>

Use the icon on the toolbar to change the font size.



(2) Switch/Lamp [Char. Prop.] display improved

OFF/ON/P3... Text for each pattern can now be displayed simultaneously.

(3) Switch/Lamp [Align] and [Copy] icons added

You can easily align (Flush Left/Centering/Flush Right) or copy text by clicking the icons.

