

MONITOUCH Configuration Software Smart Editor Feature/Useful Function

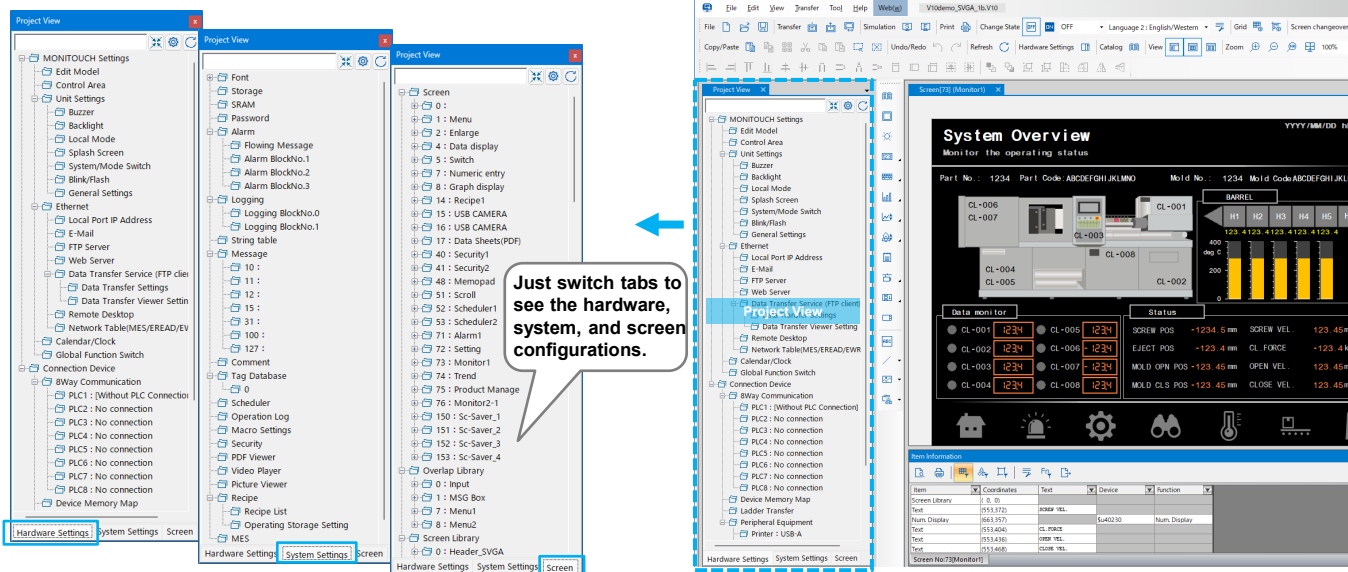
From the perspectives of seeing , touching , and learning ,

introducing the features and functions of the smartly evolved configuration software "Smart Editor" that you'll want to use right away!



Smooth operation is ensured by the at-a-glance device configuration and the editing screen that remains visible during editing

The [Project View] pane allows you to check the system configuration and the registration status of screens as well.



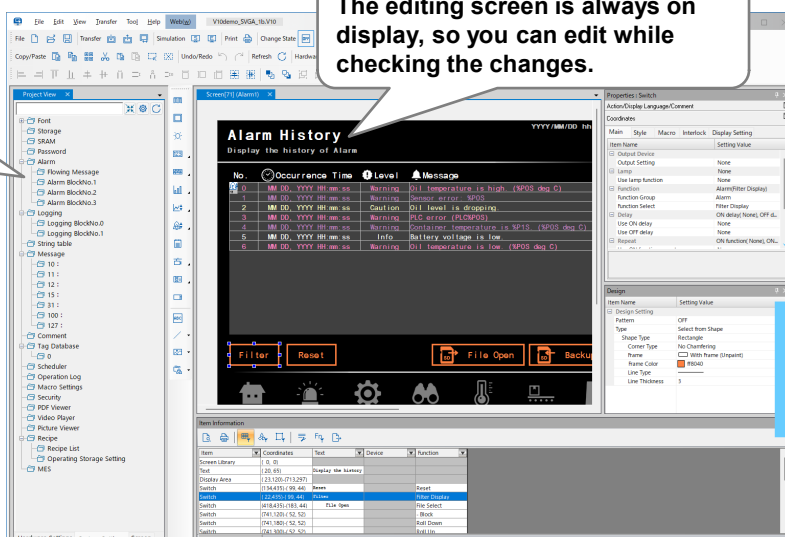
The screenshot shows the MONITOUCH software interface. On the left, the 'Project View' pane is open, displaying a tree structure of settings categorized into Hardware, System, and Screen. A blue arrow points from a text box to the 'Screen' sub-category. The main window displays a 'System Overview' screen with various status indicators and a 'Data monitor' section. A 'Properties' pane is visible on the right side of the main window.

Just switch tabs to see the hardware, system, and screen configurations.

The editing screen remains visible whether you're checking the configuration or registration details, or editing settings for each part, allowing you to edit while checking the changes.

In the Project View, system settings can be checked anytime.

The editing screen is always on display, so you can edit while checking the changes.



The screenshot shows the 'Alarm History' screen with a table of alarm events. The 'Properties' pane on the right is open, showing settings for the selected screen. A blue callout box points to the 'Design Setting' section of the Properties pane.

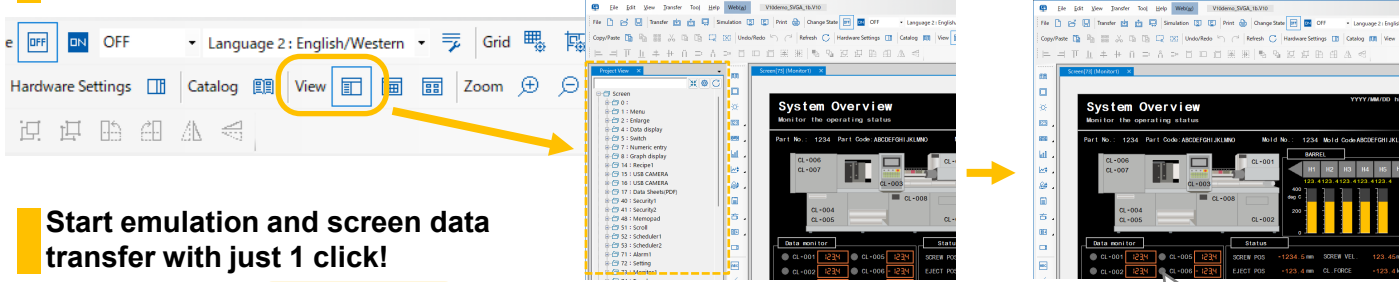
No.	Occurrence Time	Level	Message
0	MM/DD/YYYY HH:mm:ss	Warning	D11 temperature is high (900S deg.C)
1	MM/DD/YYYY HH:mm:ss	Warning	Control error
2	MM/DD/YYYY HH:mm:ss	Caution	Control error (PLC error)
3	MM/DD/YYYY HH:mm:ss	Warning	PLC error (PLC200S)
4	MM/DD/YYYY HH:mm:ss	Warning	Positional error (H101) (900S deg.C)
5	MM/DD/YYYY HH:mm:ss	Info	Battery voltage is low
6	MM/DD/YYYY HH:mm:ss	Warning	D11 temperature is low (900S deg.C)

Changing the font size in the [Properties] pane >> Scheduled to be supported in April 2026

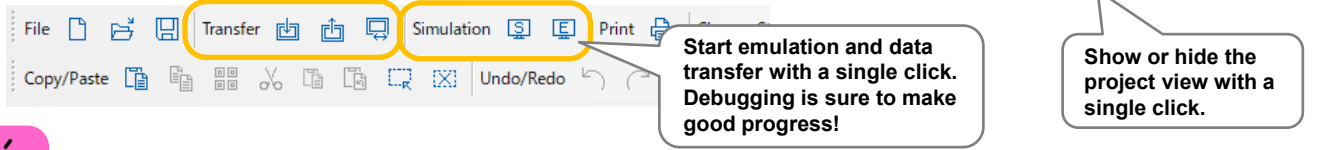


1 click simplicity for configuration checks and operation tests!

Icon bar is always displayed. Simply click an icon to show the desired view or hardware settings.



Start emulation and screen data transfer with just 1 click!



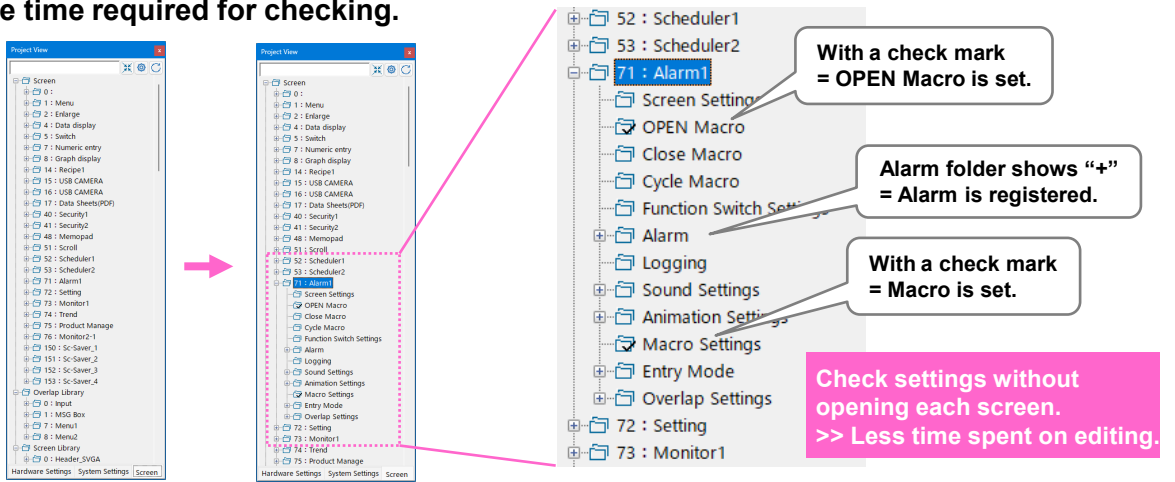
Start emulation and data transfer with a single click. Debugging is sure to make good progress!

Show or hide the project view with a single click.



The more you learn about Project View & Properties, the more useful they become!

The registration status of screen data files can be viewed in a tree structure. By expanding the “+” mark, you can also check the registration status of functions within each screen. This reduces the time required for checking.



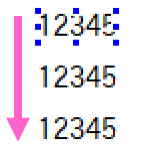
With a check mark = OPEN Macro is set.

Alarm folder shows “+” = Alarm is registered.

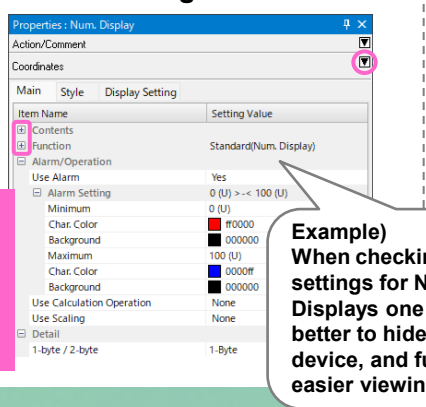
With a check mark = Macro is set.

Check settings without opening each screen. >> Less time spent on editing.

Properties are saved in your preferred display state, making it convenient for repeated settings or checks. Also, when multiple items are selected, different settings are highlighted in red, helping you to spot differences at a glance!

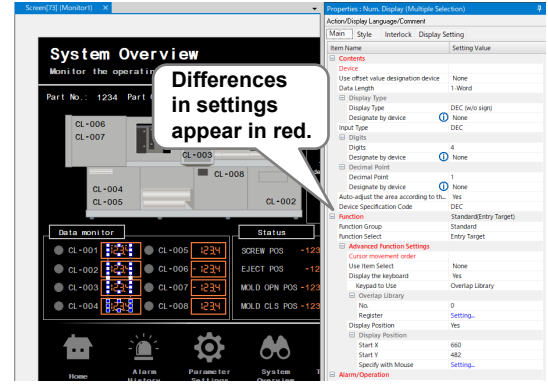


Multiple Selection



Example) When checking alarm settings for Num. Displays one by one, it's better to hide coordinates, and function for easier viewing.

Significantly reduces the effort for adding items to existing screens!



Differences in settings appear in red.

