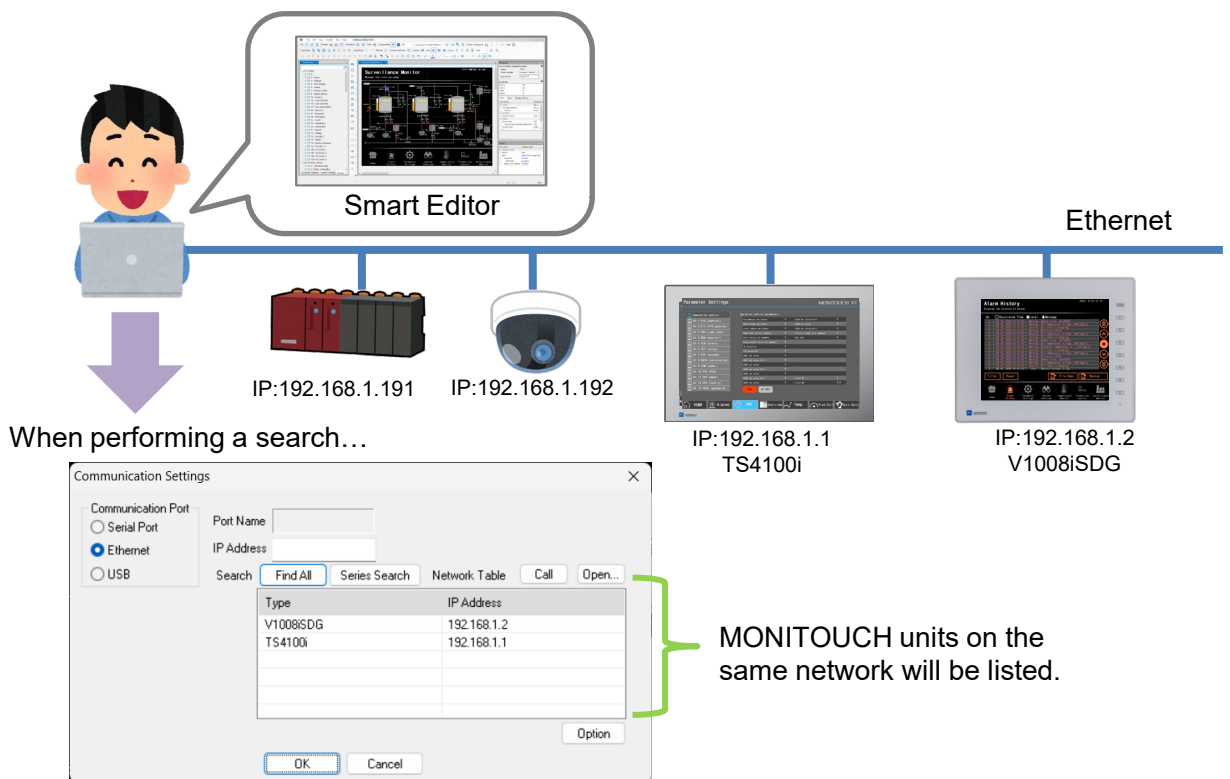


Introduction of Useful Functions in Smart Editor

HMI Search

V10 / TS4000 / X1 series

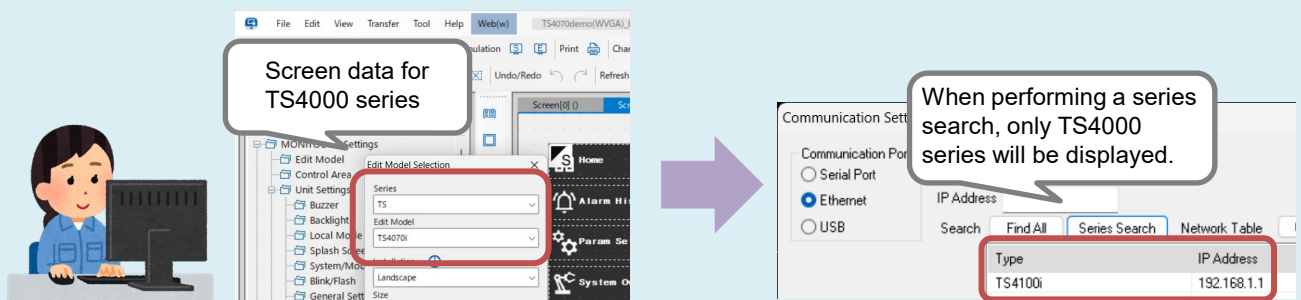
When transferring screen data via Ethernet, MONITOUCH units on the same network group can be searched for and detected even if their IP addresses are unknown. The search result shows the model types and the IP addresses, helping to reduce transfer errors.



Series Search

* Available only when writing screen data.

Among units on the same network, only MONITOUCH units from the same series as the screen data being edited will be displayed in the search results.



Copying colors

Specify a color using the setting value (HEX).
By copying and pasting the setting value, you can easily unify the colors of multiple parts.

For example, it can be used when making the underline of an item name the same color as the graph!

Copy the setting value.

Same color!

Paste the copied value into the original value "ffffff".

The diagram illustrates the workflow: 1. A 'TOTAL PRODUCT' screen with a pie chart and text. 2. The 'Properties: Pie Graph' window where the 'Data Color' is set to 'ffd008'. 3. The 'Properties: Line' window where the 'Color' is set to 'ffffff'. 4. The final screen where the underline of 'TOTAL PRODUCT' is now yellow, matching the pie chart.

Project view filter

Use the filter search in the project view to efficiently check the screen settings.

Enter the setting you want to search for and run the filter.

No setting found (Black)
Setting found (Red)

When the settings are found, the text color of the item name is changed to red, making them easier to recognize.

Only the matched items are displayed, making it easy to find the setting.

With so many items, it's time-consuming to open and check them one by one...

The diagram shows a 'Project View' window with a search filter applied. The search term is 'ffd008'. The results show only the items with that color setting, such as '7 : Numeric entry', with their names highlighted in red.

Match case
Distinguish 1-byte/2-byte
Matched completely

Search options are also available!

