

<Useful Function> Support for environments with strict restrictions on bringing in devices, such as clean rooms - Recipe function with built-in storage -

Recipe function with built-in (= internal) storage

- Recipe data for each product can be stored in the HMI unit's internal storage for use in production changeovers.
- Since no external storage is required, the recipe function can be used even at sites where the use of external storage is prohibited.

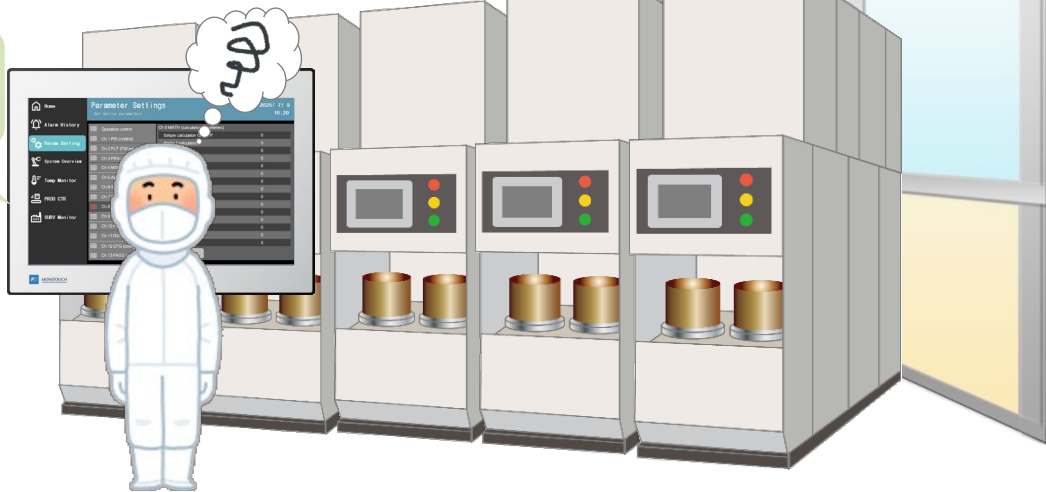
[Before]

No external storage is allowed, and recipe function is unavailable.

It would be so convenient if we could use the recipe function..



(Recipe 1)	Data	Data	Data
(Recipe 2)	Data	Data	Data
(Recipe 3)	Data	Data	Data
(Recipe 4)	Data	Data	Data
.	.	.	.
(Recipe 1000)	Data	Data	Data



[After]

External storage is not necessary, and recipe function is now available.

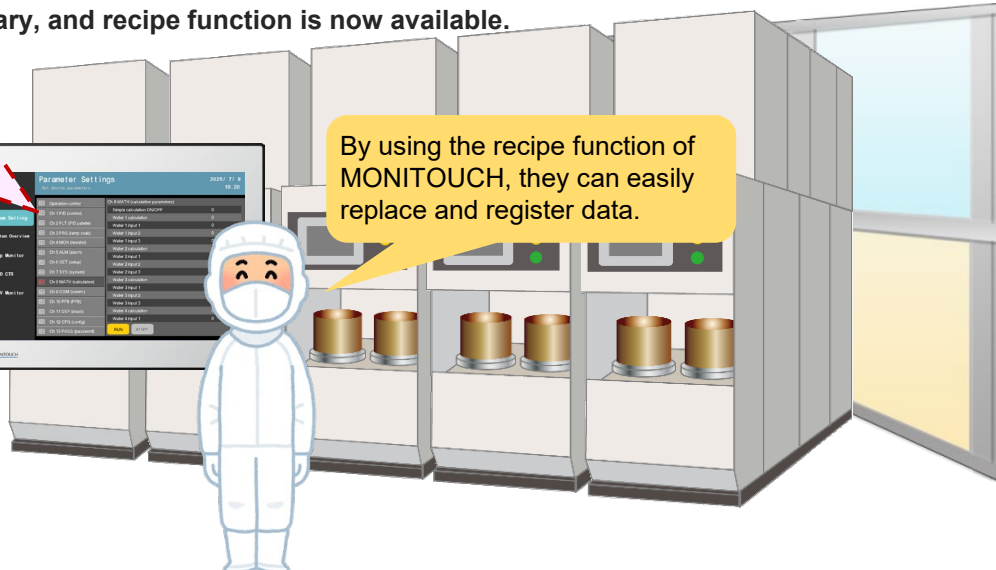
MONITOUCH
Built-in storage

Recipe area

By using the recipe function of MONITOUCH, they can easily replace and register data.

CSV

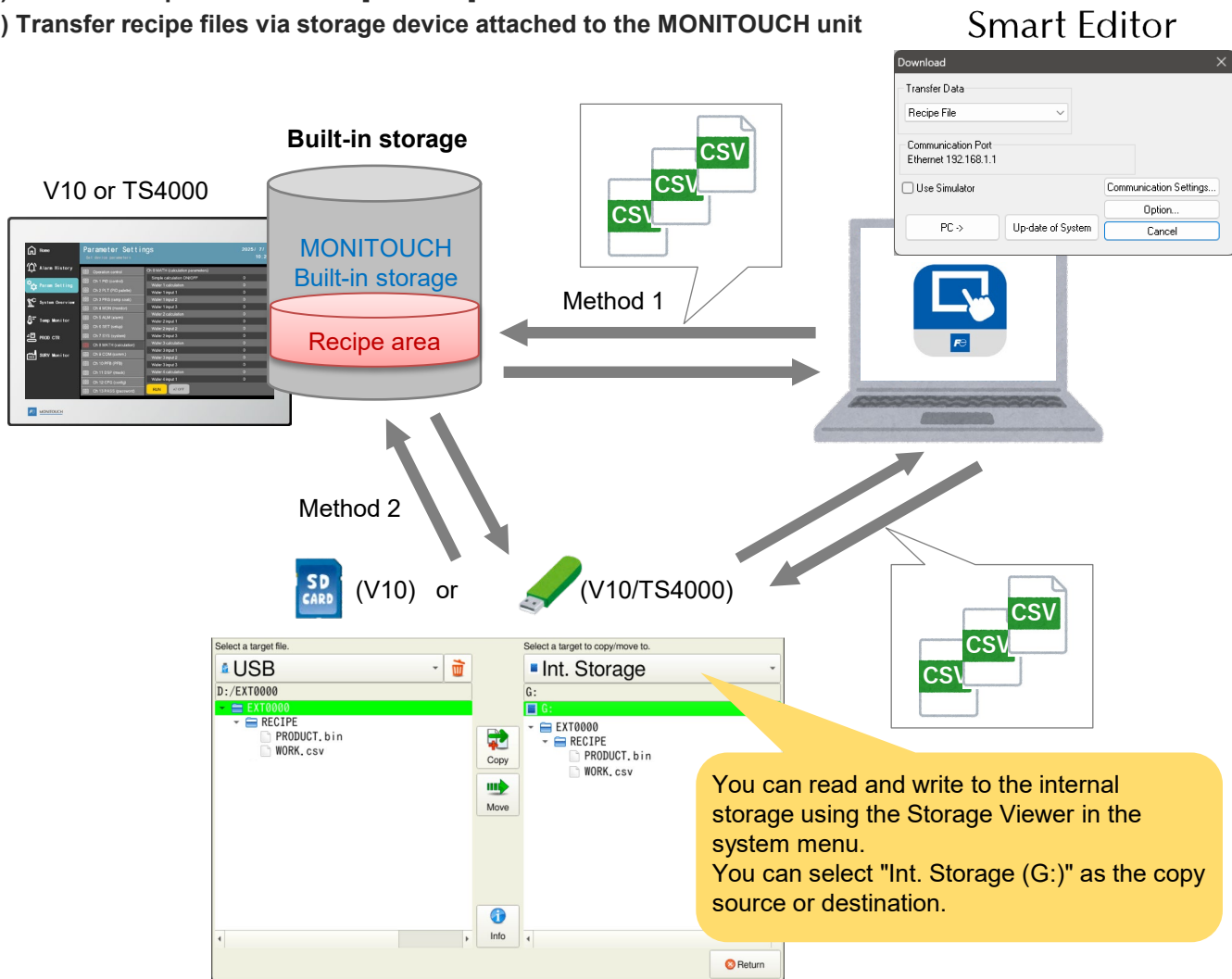
(Recipe 1)	Data	Data	Data
(Recipe 2)	Data	Data	Data
(Recipe 3)	Data	Data	Data
(Recipe 4)	Data	Data	Data
.	.	.	.
(Recipe 1000)	Data	Data	Data



Operation Image

When using internal storage, there are two methods for transferring recipe files.

- 1) Transfer recipe files from the [Transfer] menu on Smart Editor
- 2) Transfer recipe files via storage device attached to the MONITOUCH unit



Specifications of Internal Storage Area

For more information, refer to [Chapter 15 Recipes] of "Smart Editor Reference Manual 1".

Item	Description	Notes
Drive name	G:	
Size	128 MB	
Number of files	No limitation (Extensions: .csv, .bin)	Total size to be less than 128 MB
Free space display	System device memory \$s1826, 1827	Unit: Kbyte

